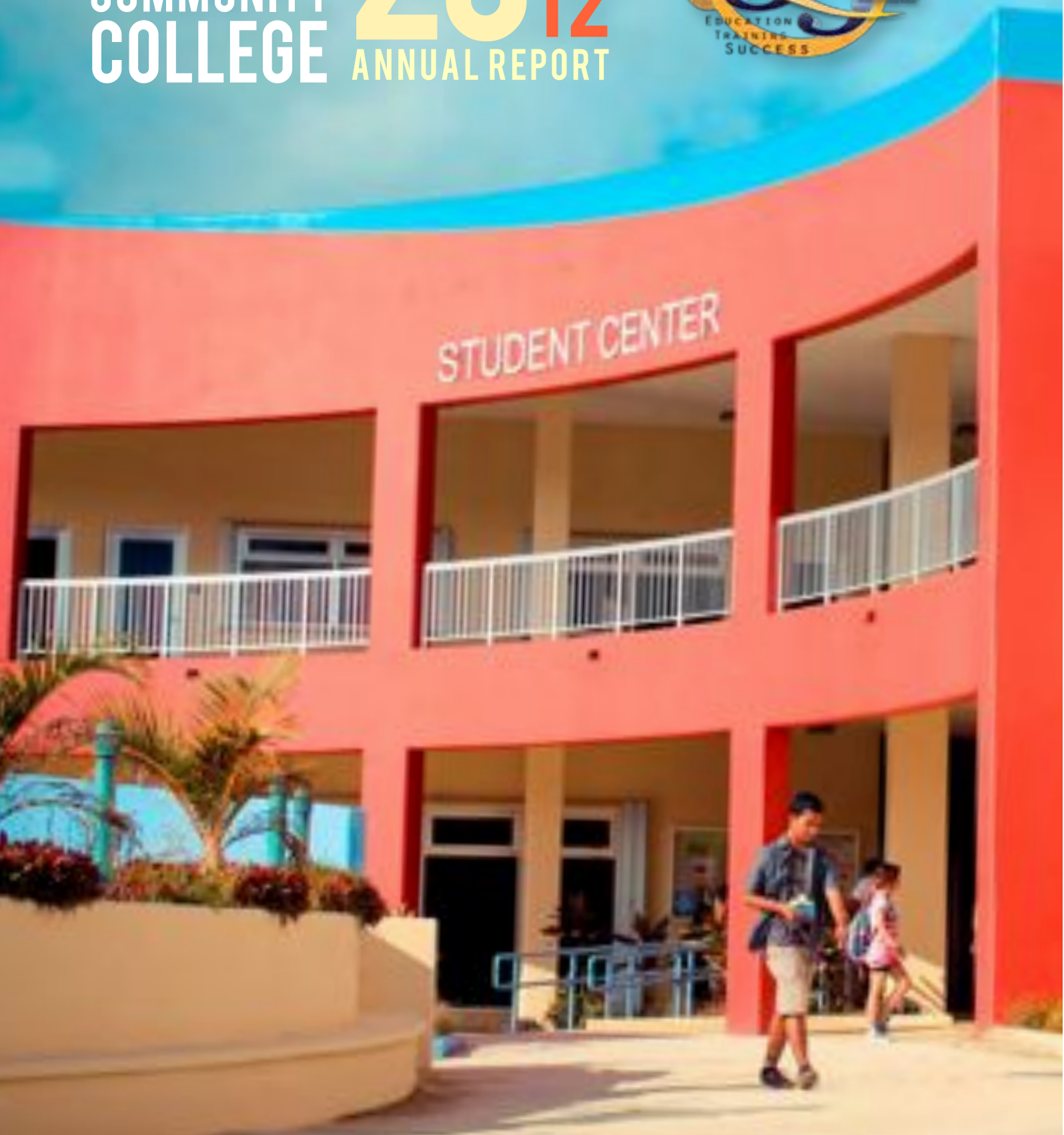


GUAM
COMMUNITY
COLLEGE **20**¹¹₁₂
ANNUAL REPORT





1977

2012



35 YEARS OF QUALITY EDUCATION & JOB TRAINING

CONTENTS

Board of Trustees	5
Foundation Board of Governors	6
President's Message	7
Accreditation	8
2011-2012 Highlights	9
2011-2012 Spotlights	10
Postsecondary Highlights	12
Apprenticeship Partners	14
Service Learning	16
Secondary Programs	18
Adult Education	20
Continuing Education	21
Alumni Highlights	22
GCC Donors	23
Scholarship Opportunities	25
Grant Highlights	26
11 th Clean Audit/Future Projects	27
FY 2011 Financial Highlights	28
Excerpts of FY 2011 Audit	29



MISSION

The mission of Guam Community College is to be a leader in career and technical workforce development by providing the highest quality education and job training in Micronesia.

(Board of Trustees Policy 100)

VISION

GCC will continue to pioneer labor force development within the Western Pacific, best understanding and meeting the educational, career and technical training needs of the economy. It will be Guam's premier career and technical institution and finest secondary and postsecondary basic educational institution serving the island's adult community. Its excellence will continue to be recognized because of its service to employers, employees, and the community at large.

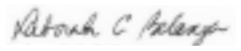
BOARD OF TRUSTEES

Hafa Adai,

It is my honor, as the new chair of the GCC Board of Trustees, to report that not only does Guam Community College continue to provide the education and skills our people need at record levels, but also that as the institution celebrates its 35th anniversary, it does so with full reaffirmation of its accreditation.

The accreditation process confirmed to the other board members and myself just how essential our support is to the success of the College. Guam's economy presents challenges for government operations, including the budget for GCC. Support from board members, the business sector and from the community in general is critical to GCC being able to fulfill its mission to provide the highest quality education and job training in Micronesia.

As we look to the year ahead, the Board of Trustees pledges its continued support of the College. The sound policy decisions we make enable GCC to help produce strong, productive employees for the island's workforce.

Si Yu'os Ma'ase,

 Deborah C. Belanger

BOARD OF TRUSTEES



Deborah C. Belanger
Chairperson



James Pangelinan
Student Member



Edward G. Untalan
Vice Chairperson



Gina Y. Ramos
Member



Frank P. Arriola
Secretary



Kenneth C. Bautista
Support Staff Advisory Member



Richard P. Sablan
Treasurer



Dr. Karen M.S. Sablan
Faculty Advisory Member

**FOUNDATION
BOARD OF
GOVERNORS**

Hafa Adai Friends of GCC!

As you will see in the pages of this year's annual report, both GCC's enrollment and our partnerships with island businesses are at record levels, our students are being recognized nationally, and our graduates are now productive members of Guam's workforce. The GCC Foundation takes pride in these successes, and we thank you for your role in making them happen. Your support allows the Foundation to provide scholarships and financial support for much-needed capital improvement projects on the GCC campus.

We look forward to more campus upgrades next year and more success stories. As always, we humbly ask for your continued support of Guam Community College and its mission to provide our island and our region with a strong local workforce.

Biba GCC!



Lorraine S. Okada
Chairperson

FOUNDATION BOARD OF GOVERNORS



Lorraine S. Okada
Chairperson



Eloy S. Lizama
Member



Gina Y. Ramos
Member (Ex-officio)



Gerard A. Cruz
Vice Chairperson



Eduardo R. Ilao
Member



Frank P. Dumanal
Member



James A. Martinez
Secretary



Carline Bukikosa
Member



AnnMarie T. Muna
Member



Josephine L. Mariano
Treasurer



Deborah C. Belanger
Member (Ex-officio)

Hafa Adai!

This year, as we celebrate GCC's 35th anniversary, we have definitely made our mark among the nation's community colleges.

Although GCC has been fully accredited since 1979, this year's reaffirmation stands out as the most participatory effort in the College's history. Everyone - from our students to our board members to the over 200 people employed here as faculty, staff and administrators - played a role in proving to the accreditation team that we actually do what we say we do with regard to educating our students, providing documentation of our learning processes, and managing our money. As president, I am most proud of the accrediting team's initial commendation to the College, "for a genuine sense of family spirit on campus, which is evident in its commitment to student access and student success."

Our sense of what we can accomplish when we all work together is strong here at GCC. We continue to be sustainable with our new Student Center and other campus upgrades. The federal grants we receive as well as the support of our local government, businesses and benefactors all help to make us the most viable and economical higher education choice for our students, who continue to invest in the education and training we provide in record numbers.

This year's accomplishments can be summed up in two words: GCC delivers!

Biba GCC!



Mary A.Y. Okada, Ed.D.
President



ACCREDITATION

Students, faculty, staff and administrators and the governing board all played a critical role in the reaffirmation of GCC's accreditation on July 4 by the Accrediting Commission for Community and Junior Colleges (ACCJC). The maintenance of the College's accredited status since 1979 is an ongoing process through which GCC conducts regular assessment in order to loop program, curriculum and student learning outcomes to ACCJC standards, the budget, and our mission.

Preparations for the Accreditation visit began during spring semester 2010. In October 2011 Dr. Doug Houston, an experienced accreditation team chair, visited to review GCC's Institutional Self Evaluation Report, providing valuable insights and recommendations. In January 2012, Dr. Chip Chapdelaine, chair of the team that would visit in March, came for a preview meeting with the senior management. From March 19-22, the 11-member team met with faculty, staff, administrators and students, and scrutinized documents to assess GCC's academic, governance, administrative and financial processes. The outcome of this in-depth review was reaffirmation of accreditation through 2018 – the maximum allowable period.

"The College is commended for establishing and communicating to students and the community student learning outcomes for all of its courses and programs," for "its accelerated construction program," and for "its flexibility in managing financial resources and for its efforts to compensate for irregular cash flow issues."

Dr. Barbara Beno
ACCJC President

"This is a very proud day for all of us at GCC. ACCJC has confirmed that as a College, we are doing what we say we're doing with regard to what students learn in the classroom, how their education applies to the real world, how we manage our finances, and how we plan for expansion of our curriculum and our facilities."

Dr. Mary Okada
GCC President



HIGHLIGHTS

On December 9, 2011, GCC opened its third new building in as many years – the new Student Center. The \$4.4 M federally-funded building houses a student lounge, meeting rooms, tutoring center, computer lab, the Student Health Center, and GCC's federally funded Project AIM and College Access Challenge Grant Program. Federally funded photovoltaic panels on the building's roof assist with campus sustainability efforts.

35th Anniversary Gala

On May 5, 2012, 400 people gathered at the Hyatt Regency Guam to celebrate Guam Community College's 35th anniversary. At the gala, the GCC Foundation awarded 10 outstanding students with \$1,000 scholarships each, and the first-ever First Hawaiian Bank John K. Lee Endowment Scholarship was awarded to student James Pangelinan, in memory of the late former GCC board member John K. Lee.

College & Career Readiness Summit

GCC invited nearly 200 middle and high school students, plus parents, industry representatives and education professionals to a summit May 10-12 that focused on different career clusters of interest to students, and on how the GCC CTE programs in the public high schools provide a pathway to GCC postsecondary associate degree and certificate programs and/or baccalaureate degrees in those fields.

Graduation 2012

GCC graduated 348 students on May 18, including a record 73 apprentices, all employed at island businesses, who earned their journey worker certificates. John Cruickshank, a senior program analyst with the National Science Foundation (NSF), and the Micronesia and South Pacific outreach coordinator for NSF's Asian-American and Pacific Islander Initiative, was the commencement speaker.

New web site

In July, GCC launched its new and improved web site, designed with student and faculty input to be more "student-centric."



SPOTLIGHTS



- Jacob Fathal was one of 50 community college students from across the U.S. and Canada to be named 2012 New Century Scholars in March. A member of Phi Theta Kappa honor society and a GCC Ecowarrior, Fathal was also accepted into the University of Texas at Austin's Environmental Science Institute Research Experience for Undergraduates last summer. He graduated in May with an AS in Computer Science, and is now pursuing his baccalaureate at the University of Guam.
- Visual Communications students in the Digital Arts Society student organization presented their first art exhibit, Art Redefined, on April 13 in the Multi-Purpose Auditorium.
- James Pangelinan, a freshman in Liberal Studies, was GCC's first congressional intern in summer 2012. Pangelinan worked at the Guam Office of Delegate Madeleine Z. Bordallo, and spent a week at her D.C. congressional office.
- Accounting major Floregine Delacruz attended the Phi Theta Kappa Honors Institute in Denver in June.



COMMUNITY

- G4S Security Systems donated an alarm system to the GCC CTE Electronics classroom at Okkodo High School in December 2011, following several damaging burglaries at the school. Instructor Adrian Atalig also teaches GCC Apprenticeship classes in the evenings and had 10 G4S employees as students. "G4S is part of the community, and we saw this opportunity to help out," said Ed Bitanga, G4S Manager.
- U.S.D.A. Hawaii State Director Chris Kanazawa toured the Foundation Building in September, two months prior to its grand opening. U.S.D.A. supplied a \$3.5 M loan for the renovations. "This project supports President Obama's initiatives for job creation, sustainability, and education. Plus, it's a beautiful building," he said of the 21,000 square foot structure, slated to be the second LEED-certified building on campus.

SUSTAINABILITY

- GCC Ecowarriors were out en force throughout the academic year, recycling at nearly every event on island. Their efforts helped the Guam Environmental Education Committee win the U.S. EPA Environmental Achievement award for Educational Leadership in August.

ADMINISTRATION // STAFF

- GCC staff formed a Staff Senate in May, electing the following officers: President Elizabeth Duenas, VP Johanna Camacho, Secretary/Treasurer Ava Garcia, and Representatives at large Donnie Lizama, Latisha Leon Guerrero, Vivian Guerrero, Ana Mari Atoigue, Tamara Hiura, and Cathy Anderson.
- Lolita Reyes, Asst. Director of Development and Alumni Relations, was appointed to the Serve Guam Commission in November, to assist with organizing community service efforts around the island.
- Jeff Fabro, Management Information Systems computer technician II, completed his certification for Microsoft Windows 7 Operating System Configuration, and Joel Ridgell, Teleprocessing Network Coordinator, earned his CISCO certification.

FACULTY

- Dr. Lisa Baza-Cruz, GCC English Department chair, was appointed to the Guam Commission for Educator Certification in October, 2011.
- Electronics instructors Terry Kuper and Adrian Atalig underwent training to teach a photovoltaic installer course in November, as part of GCC's curriculum expansion plan for fall 2013.
- Rose Loveridge, Practical Nursing instructor, was named EMS Advocate of the Year in May for her integral role in organizing national EMT certification training for over 100 local and federal fire department employees.
- Through a grant from TakeCare Insurance, Practical Nursing faculty Jennifer Artero, Angela Bordallo, and Dorothy Lou Manglona earned their masters degrees in nursing from the University of Phoenix in May.

POSTSECONDARY HIGHLIGHTS

- Academic Year 2011-2012 was again a record year for enrollment, with 2,577 students taking postsecondary courses in fall 2012. Despite the changing face of Guam's economy and the delay of the military buildup, residents continue to show faith that GCC's 21 associate degree and 17 certificate programs will lead to better employment opportunities and a better quality of life. Among the most popular continue to be Education, Early Childhood Education, and Criminal Justice.
- With assistance from a \$25,000 Perkins CTE grant, GCC's Education Department opened the Mansana Center in February, providing 270 Education and Early Childhood Education majors with a working laboratory to encourage the creation of culturally and linguistically relevant materials for young children that will allow them to more easily transition into subjects in English in elementary school.
- Asst. U.S. Attorney Mikel Schwab, who earned his associate degree in accounting from GCC in May, was a guest speaker at the GCC accounting conference, "Accounting for the Future," in February. Schwab spoke to nearly 70 accounting students about the importance of forensic accounting to the legal system.
- Students held their annual Spring Festival in the new Student Center for the first time in March, drawing over 600 students, GCC personnel, and the ACCJC accreditation team to the festivities. The Fall Festival in September drew an even larger crowd – over 700 students!



POSTSECONDARY



- Members of Phi Theta Kappa Beta Beta Xi, GCC's chapter of the honor society for community and two-year colleges, earned "Five-Star" status this year. Beta Beta Xi received special commendation at the Pacific Regional Convention and the national convention.

- During spring semester GCC offered a transition course for the island's emergency medical technicians (EMTs) to come into compliance with national standards. Funded through GCC's Area Health Education Centers grant, the training brought instructors from the National College of Technical Instruction, the nation's largest private college of Emergency Medical Services. "We're doing this in order for the EMTs on Guam to be able to be recognized at a national level and prepare them for paramedic status," said Rosemary Loveridge, RN, then-acting director of GCC's Allied Health department.

- Supervision & Management majors hosted two senatorial forums in April and May to give student voters an opportunity to meet the candidates running for the Legislature in November and question them about their stance on key issues.

- In April, the Culinary Arts Buffet & Catering students demonstrated their talents with weekly luncheon buffets that drew guests from nearby businesses and agencies, helping to spread the word about the students' talents.

APPRENTICESHIP

This year, Western Partitions, Inc., became the 100th company to invest in a partnership with GCC through the Apprenticeship program. The company is helping to build the new Naval Hospital in Agana Heights.

“It’s a job with a purpose, and I get to go somewhere.”

- Dominick Santos, Apprentice Carpenter, Western Partitions, Inc.

“We always intended to use the local workforce. We bring a lot of young people into our company so that we can train them in the way that we want them to be trained with regard to construction work.”

- Dan Rockway, Western Partitions Project Superintendent.

Apprenticeship partner Guam Shipyard graduated seven apprentices in May and planned to hire 30 additional apprentices – a true sign that Guam’s economy is on the upswing.

“It’s a win-win situation all around. We get locally trained, highly skilled workers and a workforce that can meet the needs of not only our local businesses, but also those that come to Guam from off-island to partake in the buildup and the post-buildup economy. Plus, these are sustainable jobs.”

- Victor Rodgers, GCC Asst. Director, Continuing Ed. & Workforce Development



This year’s graduation cohort included a record 73 men and women that reached journeyman status in their respective fields, from auto mechanics to wastewater treatment plant operators. They were among 345 active apprentices in the GCC Apprenticeship program, which combines on the job training and academic trade theory training for nearly 60 trades. An apprentice works full time for the company with which they are apprenticed, and takes the required 144 hours of trade theory classes at GCC per year in order to earn their journeyman certificate. The program is administered by the U.S. Department of Labor in conjunction with GCC. The company also registers with the Guam Registered Apprentice Program with the local Department of Labor, which pays for half of the apprentice’s salary for the duration of the program, medical/dental insurance, and protective gear needed on the job. In addition, qualified companies may receive a tax credit under Guam law.

SERVICE LEARNING



For the third consecutive year, GCC students' Service Learning projects have earned the College recognition on the President's Higher Education Community Service Honor Roll. GCC's commitment to service in the community is outlined in its Institutional Strategic Master Plan: GCC "will also play a key role in community wide projects to enhance and preserve the quality of life of all Guamanians. Through volunteerism and the provision of outreach assistance to organizations and causes which aid the workforce, GCC will remain a visible and important partner in community development." Civic engagement is one of seven Student Learning Outcomes identified as core curriculum requirements for all programs. Students are required to complete a needed service or civic engagement project wherein they put into practice what was learned in the classroom, and demonstrate an understanding of the need for and value of lifelong civic engagement.



SERVICE LEARNING



During Academic Year 2011-2012, students performed 150 service learning activities involving 730 students (a 120-student increase over last year), accumulating a total of 7,063 hours of community service.

HIGHLIGHTS

- Education students made gift bags for 200 young children for the Salvation Army's Thanksgiving luncheon, and provided make-and-take activities for 300 families of young children during outreach at a Healthy Mothers, Healthy Babies Fair.
- Supervision & Management students sponsored 13 names from the Sugar Plum Tree Christmas gift project and conducted a campus food drive, collecting several hundred cans of food for the Salvation Army.
- Criminal Justice and Social Science students again assisted with Guam's Point in Time Homeless count, preparing 450 bags of food and supplies and assisting in their distribution to people living on beaches, in abandoned cars or in shacks in the boonies. Poignant class reflections highlighted the impact of this project on students' attitudes toward the homeless.
- Practical Nursing and Medical Assisting students assisted with an island-wide bone marrow drive, and Medical Assisting students provided free health screenings for dozens of senior citizens at a Department of Public Health seniors' conference.
- GCC Ecowarriors assisted at 22 island events, either cleaning or sorting through garbage for recyclables. They also constructed recycling bins for a Micronesian subdivision to teach outer islanders about recycling. Their efforts at the Liberation Day Parade (the island's largest annual event) helped to net over 1,500 pounds of recyclables.

SECONDARY PROGRAMS



SECONDARY

A total of 2,368 students enrolled in GCC's 10 Career & Technical Education (CTE) programs in Guam public high schools for fall semester 2012, with the three most popular being Automotive Service Technology, Lodging Management, and Electronics. In order to encourage more high school students to pursue postsecondary education and sustainable careers, effective spring semester 2012, GCC instituted a formal Dual Credit Articulated Programs of Study (DCAPS), which outlines the awarding of college credits at GCC for mastery of Student Learning Outcomes (SLOs) gained in CTE courses taken at the high school level. This year, DCAPS agreements were established for the CTE Automotive Service Technology, Early Childhood Education, Electronics, Marketing, Lodging Management, and ProStart (culinary) programs. Agreements for Allied Health, Automotive (Collision Repair & Refinishing Technology), Construction Trades, and Visual Communications programs are pending review and alignment of secondary to postsecondary course SLOs.

Also established is the Dual Enrollment Accelerated Learning (DEAL) program, which allows eligible students to earn both high school and college credits for English and Math courses taken in high school.



HIGHLIGHTS

- The Okkodo High School Lodging Management Program team of Raquel Maminta, Iris Lapid, Ranalyn Sison and Ameer Fejeran took second place at the 9th annual American Hotel & Lodging Educational Institute National LMP Competition in Florida, after winning the championship in 2011. "We found out that it was easier getting the championship than to defend it," said Maminta, OHS captain.
- The George Washington High School AutoCADD class designed their award winning "Green Dream Home" for the University of Guam Center for Island Sustainability contest in April. They drew the concept – slightly raised off the ground to prevent radon gas buildup and provide cooler flooring, windows that promote natural lighting and a double roof system that eliminates the need for air conditioning – by hand.
- The 2nd annual Electronics Skills Challenge in April allowed the top-scoring students from the 341 students enrolled in CTE Electronics courses in the public high schools to show off their skills for industry representatives who acted as judges. GTA, L & K Communications, Pacific Data Systems, Marianas Electronics, G4S Security Systems, IT&E, AllStar Quality Business Systems, and the Guam Power Authority sponsored the contest.
"These are the future employees of GTA." Paul Ibanez, GTA Manager.
- Students in John F. Kennedy High School's Tourism Academy shadowed employees for two days to observe the integration of various hotel and food & beverage divisions in order to provide quality service to guests. Participating hotels included the Hyatt Regency Guam, Guam Plaza Hotel, Hotel Nikko Guam, Pacific Islands Club, Marriott Resort and Spa, Guam Hilton Resort and Spa and Fiesta Resort Guam.
- George Washington High School Autobody students helped to refurbish a 1970 El Camino that served as the grand prize for the raffle drawing during the 2012 GCC Foundation 35th Anniversary Gala on May 5. M80 Systems donated the classic car for the raffle.

ADULT EDUCATION

ADULT EDUCATION

- GCC's Adult Education Office served approximately 600 students in its Adult Basic Education, Adult Secondary Education, and English as a Second Language programs this fiscal year. Of that total, 285, or nearly half, completed their course of study.
- The annual Adult Education Conference "Promoting Literacy through Diversity," on April 11-12, focused on programs to help promote adult literacy, explore schooling, career options, and success in the workforce. A total of 259 people attended the conference, which was sponsored by the Adult Education Office and GCC's grant-funded College Access Challenge Grant Program.
- In May the Adult Education Office teamed up with Northern Marianas College to host a free conference, "Effectively Teaching Adult Learners," in order to provide education professionals – teachers, counselors, and administrators – with methods to successfully teach adult students. The conference also offered one (1) Continuing Education credit.

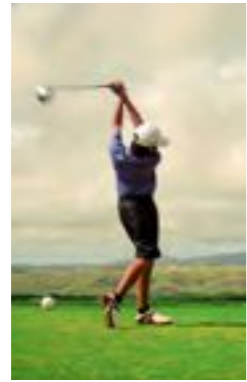


CONTINUING EDUCATION

GCC's Continuing Education Office served over 11,000 people during the fiscal year, through postsecondary credit offerings, non-credit courses or CEUs, and Prometric, HOST, and Pan online testing. Highlights include:

- Project HATSA (Helping Achieve TANF Success through Actions) launched in December 2011 through GCC and the Department of Public Health to teach people in the Temporary Assistance for Needy Families program basic construction skills, heavy equipment operation, blueprint reading, and other construction industry skills. Through the program, Sara Falgan, a single mother, became a valued administrative assistant with DCK Pacific.
- GCC's Office of Continuing Education partnered with the Guam Chamber of Commerce to launch the WorkKeys Job Analysis, Assessment & Training program in Simon Sanchez, George Washington, and John F. Kennedy High Schools, to help strengthen students' ability to be competitive upon graduation. The test measures a person's skill level against those needed for over 18,000 occupations. Ella May Delfin, a JFK senior, was the first high school student to score at the gold level.
- Students in CE's first Procurement course launched in January with instructor and attorney John Thomas Brown introducing the legal aspects of the procurement process. The popular course is designed for both government officials and individuals working in the private sector that do business with the government of Guam.
- The Summer Educational Opportunity Program (SEOP) partnered GCC's CE Office with the Chamber of Commerce, Guam Contractor's Association, and the Agency for Human Resources Development to offer summer employment for 26 high school high achievers. In response to business community members disappointed with the work ethic of young employees, the goal is to build a better work ethic among students.





DONORS

THANK YOU

2011 - 2012 LEVELS OF GIVING

DEVELOPMENT // ALUMNI

The GCC Foundation is a legally separate, private corporation that raises funds for student scholarships and to support Capital Improvement Projects at the College.

To make a contribution, call 735-5611 or log onto www.guamcc.edu.

EVENT HIGHLIGHTS

- The 2011 Par Excellence Golf tournament hosted 146 golfers at the Leo Palace Resort Golf Course in September.
- Annual Christmas Tree Sales sold over 400 Christmas trees and 100 Christmas wreaths in December.
- The 1st GCC President's Parade of Shoes took place at Hagatna Riverside in February 2012, where contestants strutted their high heels in support of GCC.
- GCC's first mobile phone giving campaign launched in April with IT&E, wherein mobile users texted "4422" (4GCC) to give \$5 dollars to the Foundation.
- 400 people attended the GCC 35th Anniversary Gala Dinner at the Hyatt Regency Guam in May, where the Foundation awarded 10 scholarships in the amount of \$1,000 each to 10 outstanding students, and named Dr. Kimberly K. Bersamin, Guam Housing & Urban Renewal Authority Personnel Services Administrator, as the 2012 GCC Distinguished Alumnus.
- GCC sophomore James E. Pangelinan was awarded the 1st annual First Hawaiian Bank/ John K. Lee Scholarship in the amount of \$1500.

VISIONARY CIRCLE OF FRIENDS

Bank of Guam
TakeCare Insurance

CIRCLE OF PARTNERS

Frank Blas & Family
John K. Lee // First Hawaiian Bank
Lou Leon Guerrero

CIRCLE OF SUPPORTERS

Daniel & Almeda Okada
David & Mary Okada
Dorothea O. Toves
George & Doreen Pereda

CIRCLE OF BUILDERS

AnnMarie Muna
Association of Government Accountants Guam Ch.
Bonnie Datuin
Cabot Mantanona
Carla Smith
Cengage Learning
Community First Federal Credit Union
Elizabeth Duenas
Federation of Pangasinanes on Guam
Friends of the Crime Lab
Ironwood Housing
Johanna Camacho
Lolita Reyes
Lorraine Okada
M80 Systems
Marsha Postrozny
MBJ
Morgan Stanley
Norma R. Guerrero
Rainbow Paint Supply
Ray Somera
Rebecca Toves
Reilly Ridgell

Rotary Club of Northern Guam
Soroptomist International
Victor Rodgers

CIRCLE OF STUDENTS // ALUMNI

AAUW
Abe Difuntorum
Abe Voit
AM Insurance
Ava Garcia
Bank of Hawaii
Barbara Blas
Barbara Rosario
Bertha Guerrero
Brian Aoki
California Mart
Calvo's Select Care
Carlsmith & Ball LLC
Carmen Kwek Santos
Christopher Dennis
Clint Huntington
Coast 360
Danielle Anderson
Dave Cruz
Dave Duenas
Debbie Belanger
Delisle's Beauty Supply
Deloitte
Donnie Lizama
Doris Perez
Dorothy Manglona
Dr. Ricardo Terlaje
Ed Ilao
Ed Untalan
Eddie Manglona
Edwin Limtuaco
Eleanor Damian
Elizabeth Aquino
Eloy Lizama
Eric Chong
Femi Bajomo
Fermina Sablan
Frances Tydingco-Gatewood
Francis Camacho
Frank Mesa
Galaide Professional

Services
GCC Education Department
GCC Faculty Union/AFT
Gil Yanger
Gordon Nelson
Greg Manglona
Guam Contractors Association
Guam Premium Outlet
Guam Society of America
Guam Stars & Jungle Adventure
Hank Mesa
Huan Hosei
Investigations Agency International
Jaclyn Quan
Jake Barnes
Jared Taitano
Jayne Flores
Joann Muna
Joanne Blas
Joanne Ige
Joe Benavente
Joe Flores
Joe Uncangco
John Zillian
Joleen Evangelista
Jonathan Pablo
Juanita Sgambelluri
Justine Bautista
Karllin Orioste
Kasinda Ludwig
Kin Mendiola
La'arni Servillon
Laguna Association of Guam
Larry Rhoden
Latisha Leon Guerrero
Laura Nelson
Lila Cruz
Lina Rojas
Lisa Cruz
LK Communications
Lorraine Mendoza
Louis Sunga
Lourdes Bautista
Lucy Tenorio
Margaret David

DONORS

THANK YOU

Marianas Steamship Agencies
 Marilyn Concepcion
 Marvin Cruz
 Mary Louise Paulino
 Maryann Mendiola
 MB & MLG Flores Foundation
 Michael Carandang
 Mike Castro
 Mitsue Nakamura
 MVP
 Next Generation
 Norma Guerrero
 Otha Willingham
 Pacific Association of Land Professionals
 Pacific Solar & Photovoltaic
 PacSports
 Pat Lam
 Pearson Education
 Pestex Guam
 Pete Blas
 Peter Charfauros
 Pilar Pangelinan
 Ray Blas
 Ricardo Terlaje Jr.
 Richard Arroyo
 Rick Nauta
 Robert Steffy
 Robin Roberson
 Rotary Club of Guam Sunrise
 Sarah Leon Guerrero
 Stacy McDonald Flores
 Tamara Hiura
 Tara Pascua
 Thomas Terlaje
 Toshi Doi
 TRMA
 University of Guam
 Vivian Cruz
 Westin Resort Guam
 WVCST Alumni Association
 Guam Chapter
 Yogurtland

IN-KIND DONATIONS

3M Products
 ACI Standard Consultancy
 Advance Management
 Adventure Riverboat Cruise
 Allied Pacific Builders
 AMBROS Inc.
 Amista Restaurant

Angsana Spa
 Balutan Queen
 Bank of Guam
 Bank Pacific
 BCS Cafe
 Belden Manufacturing
 Bestseller Books
 BICs
 Bill Reyes
 Brian Muna
 Calvo's SelectCare
 Cars Plus
 CENGAGE Learning
 City Hill Co. (Guam Ltd.)
 Cold Stone Creamery
 Creations Salon
 Delta Airlines
 Docomo Pacific
 Dolores & Ed Dela Pena
 First Class Travel
 Frank Dumanal
 Freedom Air
 GCC Class of 1977
 Genghis Khan
 Glimpses Guam
 Golden Sea Restaurant
 GTA
 Guahan Waste
 Guam Bakery
 Guam Fisherman's Co-op
 Guam Medical Care
 Guam SeaWalker
 Guam SurgiCenter
 Harvest Baptist Church Guam
 Hawaiian Rock Products Corp.
 Hawthorne Pacific
 Hilton Guam Resort & Spa
 Hit Radio 100
 Hyatt Regency
 I T & E
 iConnect
 IPE
 Island Tinting
 J&G Distributors Inc.
 JC Marketing Inc.
 JMI
 JP Superstore
 LeoPalace Golf Resort
 LK Communications
 Loco Promos
 Lone Star Restaurant
 M80
 Marriott Café
 MBI

McDonald's
 MCV
 Megabyte
 Meskla
 Mid Pac Liquor
 Mobil Guam
 MV Architects
 Nails by Jenneth
 National College of Technical Instruction
 National Office Supply
 Nikko Hotel
 Onedera Store
 Onward Mangilao Golf Course
 Onward Talofoto Golf Club
 Outrigger Guam Resort
 Oxygene
 Pacific American Title
 Pacific Charlie
 Pacific Daily News
 Pacific Solar & Photovoltaics
 PacSports
 Payless Supermarket
 PDS
 Pepsi Bottling Co.
 Perez Bros. Inc.
 Pestex Guam
 Planet Hollywood
 PREL
 PROA
 Proline
 Promotions Specialties
 Rotary Club of Northern Guam
 SandCastle
 Sbarro/KFC
 Seabridge
 Shampoo Salon
 Shen Enterprises Co. Ltd.
 SPPC 76
 Star Movies
 Subway
 Sunny's Beauty Supply
 Synergy Studio
 The T Factory
 Tiffany & Co.
 Tri-Vision
 Tropical Living
 Underwater World
 United Airlines
 Westin Resort

SCHOLARSHIP OPPORTUNITIES

In addition to the GCC Foundation, which hands out scholarships of \$1,000 each to ten outstanding students each year, the College also partners with various community and business organizations for scholarship opportunities for students. The newest scholarship is the \$1,500 First Hawaiian Bank John K. Lee Jr. scholarship, awarded in honor of the late John Lee, former First Hawaiian Bank Guam and CNMI region manager and longtime GCC Foundation board member. Students are highly encouraged to apply for scholarship opportunities. Applications are available on the GCC web site at www.guamcc.edu, on the GCC portal, and at the Financial Aid Office.

- The First Hawaiian Bank and Guam Business Magazine Businesswoman of the Year Scholarship Committee awarded scholarships twice this year - in October 2011 to Carmelita Reyes, and in March 2012 to Ha'ane Joy San Nicolas.
- The Association of Government Accountants (AGA) awarded GCC accounting majors Floregine Delacruz and Guoying Murday each with a \$1,000 scholarship in February 2012.
- The American Association of University Women (AAUW) awarded a \$500 scholarship to Alexis DeGracia in March.
- A Pacific Resources for Education and Learning (PREL) Scholarship of \$1,000 was awarded to Early Childhood Education major Meldie Joy Cabales in August 2012.





GRANT HIGHLIGHTS

To offset the fiscal challenges presented by the instability of government funding, GCC turns to federal grant funding. This year's grant awards included:

- DOI Technical Assistance grants of \$331,870 each provided for the purchase of "green" furniture and equipment for the Student Center and the newly renovated Foundation Building.
- A DOI Technical Assistance grant of \$85,874 supported the Cuthbert Project in the FSM, assisting the underserved population of the Chuuk Islands by providing basic English and developmental educational resources, in an effort to offset the large number of incoming students who test into remedial levels of math and English at GCC.
- The Citi Foundation's \$30,000 summer grant to GCC allowed 30 high school seniors to receive college preparatory academic instruction in English, reading, and math over the summer. Several of the students then enrolled in GCC postsecondary programs.
- The TakeCare Foundation awarded another annual grant of \$100,000 to GCC to support faculty professional development, equipment, and student scholarships. The grant enabled three GCC nursing faculty to complete their masters degrees in May.
- The College Access Challenge Grant was awarded an additional year of \$1,500,000 funding, to continue the implementation of activities and services for students at-risk of not enrolling or completing postsecondary education.

CLEAN AUDIT

President Okada called GCC's 11th clean audit from independent auditors Deloitte & Touche, LLP in March "a team effort – from faculty to administrators and support staff."

The Office of the Public Auditor commended GCC for being fiscally responsible with the local and federal taxpayer dollars given to the institution, and for maintaining its low-risk status for over a decade. Deloitte & Touche rendered an unqualified or clean opinion on GCC's Fiscal Year 2011 Financial Statements, and an unqualified opinion on the auditor's report on Compliance and Internal Controls, resulting in the independent auditor's designation of GCC as a "low-risk" auditee.

"They are all to be commended for their dedication and contributions to this status,"

- President Okada

FUTURE PROJECTS

In 2013, GCC's Institutional Strategic Master Plan will guide the renovations for the south side of campus, starting with the renovation of Building 200, which currently houses the Education Department and classrooms, and in an annex classroom, the GCC AutoCADD lab and classroom. The new building will be a two-story structure designed by Taniguchi Makio Ruth Architects to house these units and more classrooms, to meet the needs of the College's expanding student population.

Also on the horizon is the addition of several classrooms to the nearby Guam Police Department Crime Lab. This project will enable our Criminal Justice program to offer more courses in the forensic science concentrations of Forensic Lab Technician and Forensic Computer Examiner.

GUAM COMMUNITY COLLEGE BUILDING 200 RENOVATION



FINANCES

GUAM COMMUNITY COLLEGE FY 2011 FINANCIAL HIGHLIGHTS

March 5, 2012

The Guam Community College (GCC) closed Fiscal Year (FY) 2011 with an \$8.6 million (M) increase in net assets, nearly doubling its FY 2010's \$4.4M increase in net assets. This was mainly due to increases in Pell grants, American Recovery and Reinvestment Act (ARRA) grants and other federal grants, and an increase in student enrollment and tuition and fees.

Independent auditors Deloitte & Touche, LLP gave GCC an unqualified "clean" opinion on its FY 2011 financial statements and its compliance and internal controls. There was one significant deficiency pertaining to a lack of procurement documentation, but no questioned costs were identified. GCC also continued to maintain low-risk status for the 11th consecutive fiscal year, and is again commended for maintaining this status.

Increase in Revenues

Revenues were \$40.8M in FY 2011, an increase of \$6.9M or 21% from the \$33.8M in FY 2010. This was mainly due to the \$3.1M or 31% increase in Federal grants and contracts, which went from \$9.9M in FY 2010 to \$13M in FY 2011. Of the \$12M received, \$7.5M came from ARRA. There was also a \$1.2M or 24% increase in Student tuition and fees, which went from \$5.2M in FY 2010 to \$6.4M in FY 2011. Student tuition increased from \$110 to \$130 per credit hour, and there were marked increases in the post secondary enrollment for the Spring 2011 and Fall 2011 of 9.5% and 1%, respectively, as compared to prior 2010 semesters. Contributions from U.S. government had a \$4.5M or 197% increase, going from \$2.3M in FY 2010 to \$6.8M in FY 2011. Other revenues of \$1.4M consists of the \$1 M transfer from the GCC Foundation.

Increase in Expenses

The increase in revenues was enough to offset the increase in expenses, which increased by \$2.8M or 9.5% from \$29.4M in FY 2010 to \$32.2M in FY 2011. The increase in expenses was mainly attributed to the \$1.1M or 23% increase in Scholarships and fellowships, which went from \$4.9M in FY 2010 to \$6.1M in FY 2011 and increases in Academic support and Planning. Academic support increased by \$543 thousand (K) or 29%, going from \$1.8M in FY 2010 to \$2.4M in FY 2011. Planning increased by \$547K or 55%, going from \$1M in FY 2010 to \$1.5M in FY 2011. Salaries and wages increased by \$1.3M or 8%, and the amount of full time employees increased by 14. Of this amount, federal funded salaries and benefits increased by \$400K for 7 new employees.

GCC Foundation

The GCC Foundation is a legally separate, private corporation that meets the criteria for reporting as a component unit of the College. The foundation, audited by Deloitte and Touche, LLP, recorded a decrease in net assets of \$823K, a 265% decline from the prior year's \$499K increase. Total investments were \$6.7M compared to \$7.5M, a decline of \$ 822K. The decline in major part was due to the transfer to GCC and an investment loss of \$102K. As previously mentioned, the foundation transferred \$1M to GCC as compared to \$362K in FY 2010.

Report on Compliance

Independent auditors rendered an unqualified "clean" opinion on the report on compliance and internal control, but identified one significant deficiency related to the lack of procurement documentation in accordance with its procurement process.

For more details, refer to the Management Discussion and Analysis in the audit report at www.guamopa.org and www.guamcc.edu.



MANAGEMENT'S DISCUSSION & ANALYSIS

GUAM COMMUNITY COLLEGE A COMPONENT UNIT OF THE GOVERNMENT OF GUAM

MANAGEMENT'S DISCUSSION & ANALYSIS
YEAR ENDED SEPTEMBER 30, 2011

Fiscal Year 2011 Overview

The College and the Island continued to encounter many challenges throughout fiscal year 2011. These challenges are the result of the economic issues facing Guam including the decreased number of tourists due to the March 2011 Japanese, earthquake and tsunami, a June 2011 13.3% (or 1.35% increase) unemployment rate, and 3.6% inflation rate. These challenges have resulted in stagnant and decreasing local appropriations and increased student enrollment. The College was able to maintain its fiscal accountability and manage the increased student enrollment, through the management of its available resources. Fiscal year 2011 resulted in the third year of Pell increases to a maximum full time award of \$5,550 and \$5,350 as of 2011 and 2010, respectively, per student per academic year. This increase is a result of the American Recovery & Reinvestment Act (ARRA) and has greatly assisted students who were struggling to go back to school. Pell grants make up approximately 64% of students tuition and fee payments.

The College received additional funds during the year through various federal and local grants. The ability of the College to source and receive additional resources through federal and local grants greatly shows its fiscal responsiveness and management of different funding sources.

- GCC was a sub-recipient of a DOI C1P grant of \$365,653 for the architectural and engineering design of the DNA laboratory and Toxicology Facility.
- GCC was a recipient of a DOI Technical Assistance grant of \$331,870 for the purchase of "green" furniture and equipment for the Student Center.
- GCC was a recipient of a DOI Technical Assistance grant of \$331,870 for the purchase of "green" furniture and equipment for the Foundation Center.
- GCC was a recipient of a DOI Technical Assistance grant of \$85,874 to support the Cuthbert Project in the FSM. The Cuthbert project is to assist the underserved population of the Chuuk Islands in providing Basic English and developmental educational resources.
- GCC was a recipient of a DOI Technical Assistance grant of \$92,000 for PAYU-TA, Incorporated, and a Guam non-profit corporation. The funding allowed for the participation at the Council for Native Hawaiian Advancement convention and provided funding to support the 2nd Non-Profit Congress convention on Guam.
- GCC was a recipient of an Office of Insular Affairs' Technical Assistance sub-grant, administered through the Governor's Office, for \$42,727. The sub-grant provided support for the 2nd Forensic Science Symposium.
- The Citi Foundation awarded a \$20,000 grant to GCC. This allowed approximately 20 high school seniors to receive academic instruction in English, Reading, and Math over the summer. Several of these students went on to enroll in the College's postsecondary programs.
- The College Access Challenge Grant was awarded an additional year of \$1,500,000. The funds will be used to implement activities and services for students who may be at-risk of not enrolling or completing postsecondary education. The grant will improve access to, or participation in, postsecondary education and college retention.

MANAGEMENT'S DISCUSSION & ANALYSIS

- GCC was the recipient of a \$216,883 Administration for Native Americans grant. The purpose of this grant is to continue the production of DVD's and materials to document the ancient Chamorro language.
- GCC was the recipient of \$100,000 from the TakeCare Foundation to support faculty professional development, equipment, and student scholarships.
- GCC was the recipient of \$13,920 from the University of Hawaii, IOA-LSMAP funding for Success Facilitators to provide in classroom assistance in math and science courses.

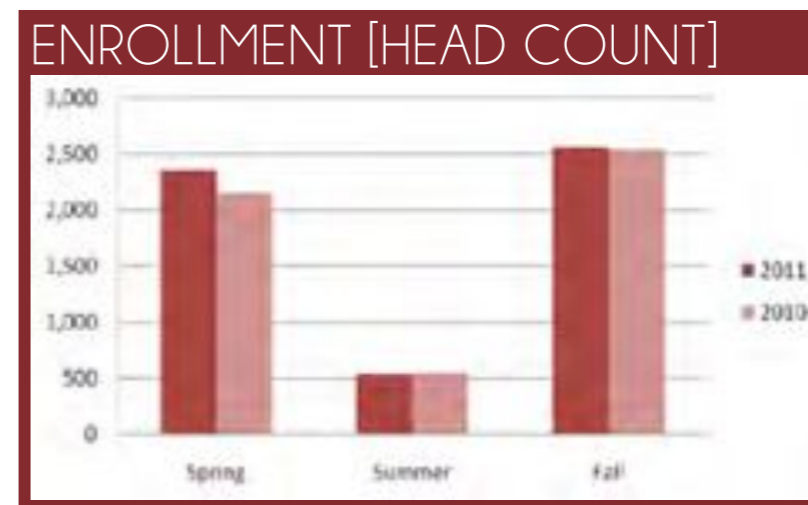
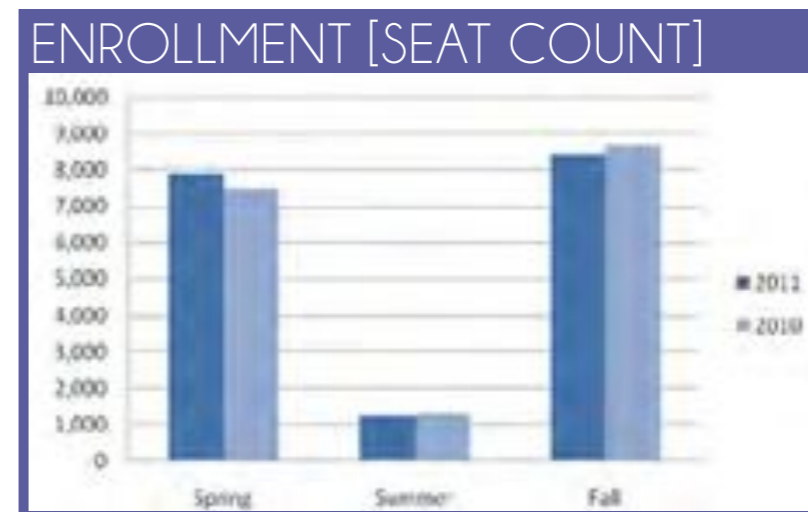
In February 2011, the College completed the Technical Opportunities Assessment Plan, a.k.a Energy Audit. The Energy Audit identified the potential energy conservation measures to include lighting retrofits, HVAC control upgrades, vending machine load controllers, water conservation, and other measures. These measures are currently being planned and included into existing and future CIP projects.

The College operated with 241 classified full time personnel positions. This does not include adjunct faculty members hired to teach additional postsecondary courses. The College's Government of adjunct local appropriation funds are used to provide personnel and other resources to the five secondary high schools and the post-secondary programs. The College continues to receive funding for the Licensed Practical Nursing (LPN) and Vocational Guidance programs. The LPN program addresses the islands' continued need to develop and train students for the Allied Health fields. The additional funding also places Vocational Counselors in each of the five public high schools to provide information to students about the career and technical opportunities available to them from the College. Also, the College receives funds from the Manpower Development Fund to support the apprenticeship programs which served 377 and 356 apprentices over 57 and 54 employers in Fall 2011 and 2010, respectively.

At the March 9, 2011 Board of Trustees (BOT) meeting, the Trustees voted to reinstate the tuition and fee increase for Fall 2011, after suspending tuition increases for both Fall 2009 and Fall 2010 semesters. The increase raises tuition at GCC from \$110 to \$130 per credit hour. A full-time student taking four courses will now pay \$240 more per semester in tuition and \$16 more in fees, for a total increase of \$256 per semester. The increase in actual tuition revenues is due to increases in the number of students and classes during the academic year 2010-2011. As authorized by the Board of Trustees, 50% of the proceeds from the revenue increases will be used to hire additional full time permanent faculty and 20% to hire staff and administrative positions. The BOT authorized 30% of the increase to be used for capital improvements to the campus and related operating expenses. Classroom improvements, technology lab upgrades and capital projects are funded through increases in tuition, technology and parking fees. Funds utilized in fiscal year 2011 for capital projects and technology fees were \$478,000 and \$286,000, respectively.

In September 30, 2011, the Legislature passed Public Law 31-99, which updates, amends and repeals the College's enacting legislation, Public Law 14-77. Most notable is the change in reference to previously Vocational Education is now changed to Career and Technical Education. Additionally, GCC was granted its own procurement authority and GCC was given authorization to enter into a land lease with Guam Power Authority.

There were marked increases in the post secondary enrollment seats and headcounts for the Spring 2011 and Fall 2011 of 9.5% and 1%, respectively, as compared to prior 2010 semesters. This is mainly attributable to competitive tuition rates, increases in the maximum annual allowable Pell awards, and the decline in the economic environment. Based on prior trends, declines in the global economy usually lead to increases in post-secondary enrollment, as people tend to go back to school to obtain degrees so that they can get higher paying jobs.



MANAGEMENT'S DISCUSSION & ANALYSIS

The College continues to provide career and technical education programs for students in five of the Guam high schools: GW, JFK, Southern, Simon Sanchez and Okkodo. The secondary high schools had a record enrollment of 2,268 from 2,214 students in SY11-10 and SY10-09, respectively. These programs included the Allied Health, Auto Body, Automotive Service, Construction, Electronics/Networking Lodging Management, Marketing, Pro-Start, Education and Visual Communications.

Overview of the Financial Statements and Financial Analysis

(all figures are in thousands)

Summary Statement of Net Assets

	2011	2010	2009
Assets:			
Other current assets	\$ 11,989	\$ 8,958	\$ 6,795
Accounts receivable - U.S. Government	4,322	2,295	2,759
Investments (noncurrent)	1,775	1,758	1,637
Capital assets, net	27,267	18,880	16,400
Total	\$ 45,353	\$ 31,891	\$ 27,591
Liabilities:			
Current liabilities	\$ 6,706	\$ 4,016	\$ 3,942
Non-current liabilities	3,489	1,297	1,475
Total	10,195	5,313	5,417
Net assets:			
Invested in capital assets, net of related debt	22,084	17,799	15,119
Restricted	1,833	1,793	1,830
Unrestricted	11,241	6,986	5,225
Total liabilities and net assets	\$ 45,353	\$ 31,891	\$ 27,591

The overall economic situation at the College improved from the previous year. Increases in current assets were due to the increased student enrollment in the post-secondary programs, which resulted in increased student tuition receivable and Pell grant awards. Accounts receivable increases relate to increased funding from ARRA related projects and slow local fund allotment releases. Although the economy continued to recover from the 2008 market crash, the investment balances remained fairly constant as compared to 2010. Increases in capital assets were due to the construction of the Learning Resource Center completed in October 2010 and the equipment and furniture placed in the building. Additionally, increases in construction in progress were due to the Student Center construction and the renovation and hardening of the Foundation Building with completion dates in October 2011 and May 2012, respectively. The changes in current and non-current liabilities are mainly due to ongoing construction contract liabilities, the \$2.25 million USDA loan for the Learning Resource Center, and deferred tuition revenues increases related to the Fall 2011 semester.

Due to the constraints of College and University accounting, approximately \$8,035,826 in encumbrances incurred in fiscal year 2011 have yet to be reflected as expenditures in the accompanying financial presentation, but will be liquidated with 2011 net assets. The increase in encumbrances is due to the construction costs related to the Student Center, Foundation Building, and ARRA projects.

Summary Statement of Revenues, Expenses, and Changes in Net Assets

	2011	2010	2009
Operating revenues	\$ 18,283	\$ 15,967	\$ 13,341
Operating expenses	32,195	29,762	26,610
Operating loss	(13,912)	(13,795)	(13,269)
Non operating revenues	15,653	15,900	15,648
Capital contributions	6,839	2,299	943
Change in net assets	8,580	4,404	3,322
Net assets at beginning of year	26,578	22,174	18,852
Net assets at end of year	\$ 35,158	\$ 26,578	\$ 22,174

Statement of Cash Flows

	2011	2010	2009
Cash provided by (used in):			
Operating activities	\$ (9,118)	\$ (11,087)	\$ (13,113)
Noncapital financing activities	13,289	14,035	15,495
Capital and related financing activities	(3,902)	(2,650)	(3,460)
Investing activities	(17)	(121)	38
Net change in cash and cash equivalents	252	177	(1,040)
Cash and cash equivalents at beginning of year	1,193	1,016	2,056
Cash and cash equivalents at end of year	\$ 1,445	\$ 1,193	\$ 1,016



At the end of fiscal year 2011, the College recognized a 24% increase in student tuition and fees due to the continued increased student enrollment and the Fall 2011 tuition rate adjustment. Federal revenue increases were contributed from ARRA related funds expended in fiscal year 2011. The net assets of the College show an increase of \$8.6 million. The \$8.6 million increase directly coincides with the increase in capital assets from completed and ongoing construction projects. Local appropriations from the Manpower Development and the General fund remained constant. In fiscal year 2011, the College received approximately 61% of its local appropriations from the Government of Guam with the remaining subsequent balance received in fiscal year 2012.

Expenditures from local appropriations increased in comparison with prior years. Increases were the result of increased personnel costs due to increased student enrollment. The actual classified employee count increased by 14, from 227 to 241, with an increased cost of \$1.26 million. During the first nine months of the fiscal year, the College received on average only 50% of its local appropriations. This required the operational reduction of contractual services and strict management and control over its resources in order to deal with the cash shortages. The College remains committed to displaying fiscal responsibility in the management of its funds by operating within the levels of authorization. Overall expenditures increased due to increased federal funds, increased enrollment that required adjunct hiring, equipment, and supply costs.

Capital Assets and Debt Administration

GCC's capital assets of \$27,267,500 as of September 30, 2011, included land, buildings and equipment. Costs incurred for the A&E and construction of the Student Center, the Foundation Building construction, the Northeast Parking lot project, photovoltaic parking lot lights, Building D generator, and other CIP projects were included in Construction In Progress. The Student Center construction was substantially completed in late October 2011. As of September 30, 2011, the College drew down 94% or \$2.1 million of the \$2.25 million U.S. Department of Agriculture (USDA) loan for the remaining construction costs of the Learning Resource Center. In November 2011, the College drew down the remaining balances of the loan. The first repayment on the USDA loan will be in March 2013. The College remained current in the repayment of the Water Tank Loan from USDA and made principal and interest payments of \$33,060 during fiscal year 2011. The College made a final payment on the USDOE loan in December 2010. Please refer to notes 3 and 9 to the accompanying financial statements for additional information regarding GCC's capital assets and long-term debt.

Management's Discussion and Analysis for the years ended September 30, 2010 and 2009, is set forth in the College's report on the audit of the financial statements, which is dated March 14, 2011, and that Discussion and Analysis explains the major factors impacting the 2010 and 2009 financial statements and can be viewed at the Office of Public Accountability - Guam website at www.guamopa.org.

Economic Outlook for Fiscal Year 2012

The College continues to monitor the economic situation of the Government of Guam (GovGuam) closely, as it receives in total 64% of its funding locally and 86% of its personnel funding from local appropriations. The legislature decreased the College appropriation budget by 6% for the General Fund and other local fund appropriations. These decreases come at a time when there is speculation of whether

or not the military buildup will happen and when GovGuam has issued a \$198 million bond to repay prior year taxpayer refunds, retiree cola payments, and retirement liabilities. The economic recession and GovGuam decreased revenues and overspending continue to affect local funding availability. Although the College continues to seek additional funding from non GovGuam sources, it still requires an increase in its base budget to grow and meet the future island demands on education.

As of January 2012, the College has not received its fiscal year 2012 appropriations. However, based on a January 2012 meeting with the Director of Department of Administration, an agreement has been made on a payment plan that will allow DOA to catch up on allotments releases. Additionally, the College has been notified by the Bureau of Budget and Management Resources that there is a 15% reserve that has been placed on all fund sources. The slow release of funds and the current reserves have caused a strain on the College's financial resources and affects the programs and future programs to students in both the secondary and post-secondary environment. Adjustments have been made to department budgets and limited spending constraints have been placed on the entire College. Funds are limited to essential instructional costs, contractual services, personnel costs, and utility costs. The College takes its finances seriously and monitors its spending within the College's procurement process. The College's management team has weekly discussions of national and local economic conditions, and how such conditions will affect the Government of Guam's finances. Based on such discussions and projection of allotments to be received by the Department of Administration, adjustments to College department budgets will be made throughout the year. The College will continue to maintain fiscal accountability for the benefit of our students.

Guam Community College recognizes the job opportunities that will be created because of Guam's military expansion and growing community needs. The College is preparing for the on-going training needs for the immediate economic impact resulting from the island's increased military activity. Consequently, the valuable skills and higher incomes this military buildup brings to Guam provides opportunities for GCC to expand its programs and services, not only to its civilian community, but the direct and indirect associations that result from this base realignment project. GCC will partner with federal and local government entities as well as private sector businesses to ensure that Guam's workforce is able to take advantage of opportunities that are available through GCC's expansive information technology, allied health, construction & trades courses - which will include GCC's Construction Trades Boot Camp, Allied Health, Education, and other academic programs - offered at the College.

The College continues to collaborate with the U.S. Federal Government, the Government of Guam, Department of the Interior, and private sector businesses in Guam in identifying issues and developing solutions that relate to Guam's military buildup and the impact it will have on the Territory and the neighboring islands of Micronesia.

The College Student Center, whose construction cost is 100% funded through ARRA SFSF grant, completed construction in October 2011 with a total construction and A&E cost of \$4.4 million. In Spring 2011, the College put out for bid the hardening and renovation of the existing Foundation Building project funded from GCC Foundation and an application for a \$3.5 million USDA loan and awarded the bid on this construction project in May 2011 for \$3,998,000 with A&E costs of \$351,845.

GUAM COMMUNITY COLLEGE
(A COMPONENT UNIT OF THE GOVERNMENT OF GUAM)


Unrestricted and Restricted Fund Supplements Schedule
Statement of Changes in Fund Balances
Year Ended September 30, 2011
(With Comparative Balances for the year ended September 30, 2010)

Fund	2011		2010		Balance 9/30/11	Balance 9/30/10
	Balance 9/30/11	Change	Balance 9/30/10	Change		
Operating	1,183,274	1,183,274	1,183,274	1,183,274	1,183,274	1,183,274
Capital	1,448,945	1,448,945	1,448,945	1,448,945	1,448,945	1,448,945
Debt	1,191,355	1,191,355	1,191,355	1,191,355	1,191,355	1,191,355
Total	3,823,574	3,823,574	3,823,574	3,823,574	3,823,574	3,823,574
Operating	1,183,274	1,183,274	1,183,274	1,183,274	1,183,274	1,183,274
Capital	1,448,945	1,448,945	1,448,945	1,448,945	1,448,945	1,448,945
Debt	1,191,355	1,191,355	1,191,355	1,191,355	1,191,355	1,191,355
Total	3,823,574	3,823,574	3,823,574	3,823,574	3,823,574	3,823,574

See accompanying notes to financial statements.

STATEMENTS OF CASH FLOWS
Years Ended September 30, 2011 & 2010

	2011	2010
Cash flows from operating activities		
Student tuition and fees	\$ 1,680,982	\$ 1,864,721
Federal grants and contracts	11,418,776	10,959,284
Government of Guam grants and contracts	607,138	559,867
Auxiliary enterprises	973,716	598,967
Other receipts, payments	1,602,659	2,265,765
Payments to employees	(16,538,739)	(14,709,661)
Payments to suppliers	(5,306,323)	(8,762,321)
Payments for scholarships and fellowships	(5,767,242)	(4,644,377)
Net cash used in operating activities	(9,118,224)	(11,067,069)
Cash flows from managerial financing activities		
Government of Guam appropriations	11,589,012	14,034,372
Cash flows from capital and related financing activities		
Purchases of capital assets	(1,929,722)	(3,668,375)
Capital contributions received	4,394,341	1,599,188
Principal paid on long-term debt	(153,699)	(648,617)
Interest paid on long-term debt	117,650	(81,683)
Net cash used in capital and related financing activities	(1591,890)	(2,649,027)
Cash flows from investing activities		
Increase in investments	(17,196)	1,208,611
Net change in cash and cash equivalents	251,716	179,147
Cash and cash equivalents at beginning of year	1,191,355	1,012,208
Cash and cash equivalents at end of year	\$ 1,443,071	\$ 1,191,355
Reconciliation of operating loss to net cash used in operating activities		
Operating loss	\$ (11,911,712)	\$ (11,795,117)
Adjustments to reconcile operating loss to net cash used in operating activities		
Depreciation	1,659,824	1,187,981
Bad debts	192,466	428,336
Loss on disposal of fixed assets	1,635	136
Cost of prior year living allowance to retirees	-	(574,200)
On-behalf payments for retiree healthcare costs	664,518	416,618
Changes in assets and liabilities		
Tuition receivable	(941,924)	(962,008)
Accounts receivable - U.S. Government and others	411,927	1,344,947
Other receivables	-	82,019
Inventory	(261,921)	1,785
Accounts payable and accrued liabilities	2,672,102	294,047
Accrued annual leave	(32,019)	(17,006)
DCRS sick leave liability	120,824	147,000
Deferred revenue	344,401	123,792
Deposits held on behalf of others	(126,741)	(3,712)
Net cash used in operating activities	\$ (9,118,224)	\$ (11,067,069)
Supplemental information of non-cash activities		
In 2011, the College acquired property of \$2,118,784 through notes payable to U.S. Department of Agriculture		
In 2010, the College remembered 100 shares for the cost of living allowance paid to the retirees of prior years for \$574,200. Such was credited to Government of Guam appropriation as such is an on-behalf payment		
See accompanying notes to financial statements		

The background image shows the Learning Resource Center at Guam Community College. The building is a two-story structure with a curved facade and large glass windows. The words "LEARNING RESOURCE CENTER" are visible on the upper part of the building. In the foreground, a set of orange stairs leads up to the entrance, where several students are walking. The sky is blue with some clouds.

Guam Community College
Created by the Community College Act of 1977,
Guam Community College offers associate degrees,
certificates and industry certification in more than
50 fields of study. GCC offers an apprenticeship
program in conjunction with 100 island employers. The
College also offers Adult Basic Education, an Adult
High School Diploma Program, GED® testing and
preparation, and English as a Second Language courses.

Guam Community College is located in the village of Mangilao.

Mailing Address
PO Box 23069 GMF Barrigada Guam 96921

Admissions & Registration
Tel: (671) 735 5531/4
Fax: (671) 735 0540

Scholarships & Financial Aid
(671) 735 5544

Accredited by the Accrediting Commission
for Community and Junior Colleges,
Western Association of Schools and Colleges

Degrees Offered
Associate of Science
Associate of Arts
Certificate
Diploma

www.guamcc.edu

Created by:
Angela Cabrera, GCC Visual Communications Student
Jayne Flores, GCC Asst. Director, Communications & Promotions