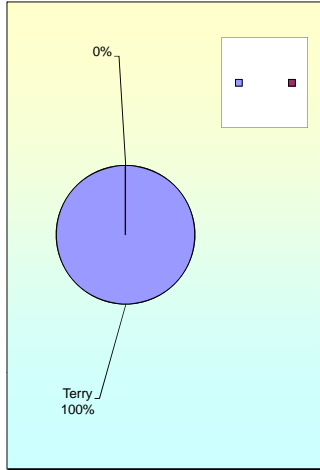


**APPRENTICESHIP TRAINING PROGRAM
STATISTICS BY SPONSORS - TRADES - GENDER - COORDINATOR**

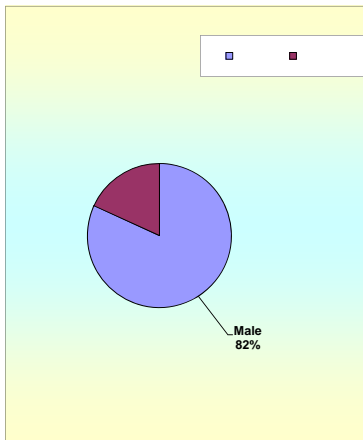
REPORT AS OF JANUARY TO MARCH 2012

ACTIVE EMPLOYERS		
1	3V's Graphic Design	2
2	Advance Electrical	6
3	Arluis Wedding	1
4	Atkins Kroll	9
5	Barrett Plumbing	2
6	Cabuhat Technical Services	1
7	CAL PAC	5
8	Cars Plus	5
9	Core Tech Int'l	5
10	Dept. of Education	11
11	Dept. of Land Management	31
12	Dept. of Public Works	2
13	DOA	6
14	Duenas, Camacho & Assoc.	3
15	DZSP 21	17
16	F.A.C.S Incorporated	1
17	Fiesta Resort	2
18	G4S Security Systems	8
19	GTA TeleGuam	56
20	Guam Contractors Assoc.	33
21	Guam Housing	2
22	Guam Plaza	1
23	Guam Police Dept.	15
24	Guam Power Authority	0
25	Guam Shipyard	9
26	Guam Waterworks	5
27	Gulf Copper	1
28	Hard Rock Café	0
29	Hawaiian Rock Products	19
30	Hilton Guam	4
31	Hyatt Regency Guam	8
32	IMCO General Co.	2
33	Infant of Prague	4
34	Ironwood Estates	2
35	Ironwood Manor	2
36	Judiciary of Guam	5
37	Lam Lam Tours	9
38	Lots of Learning	2
39	Mid Pac Far East	2
40	Next Generation	0
41	Nippo Corporation	2
42	Nissan Guam	1
43	Orion Const.	2
44	Outrigger Hotel	1
45	P&E Construction Co.	2
46	P.R. Balagtas	2
47	Pacific Human Resources	2
48	Pacific Island Club	1
49	Pacific Unlimited	6
50	Perez Bros., Inc.	5
51	PMT Corp.	0
52	Port Authority Guam	13
53	Prestige Auto	1
54	Red Stone International	3
55	Sheraton Hotel	1
56	Sumitomo Mitsui	3
57	TG Engineer	4
58	TL C Day Care	4
59	Two Lover's Point	1
60	United Tire Services	3
61	Universal Tire	1
62	V.P. Olivares	2
63	W.B. Flores & Co.	4
64	Westin Resort	1
	TOTAL:	363

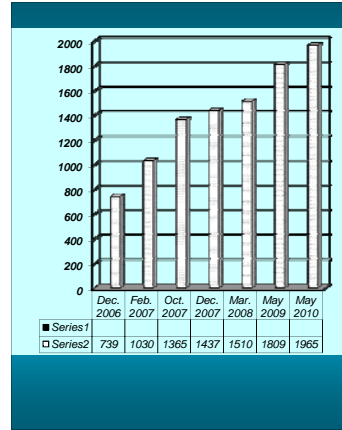
BY COORDINATOR	
Terry	363
Total	363



BY GENDER	
Male	297
Female	66
Total:	363

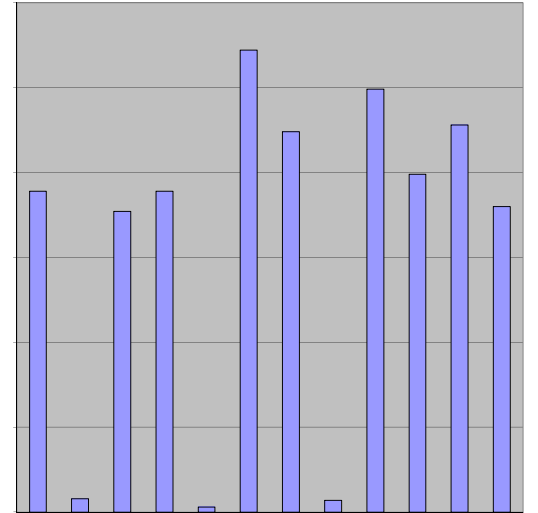


DEPARTMENT OF LABOR Alien Labor Processing Certification Division EMPLOYER'S STATISTICAL REPORT H2 Workers	
Dec. 2006	739
Feb. 2007	1030
Oct. 2007	1365
Dec. 2007	1437
Mar. 2008	1510
May 2009	1809
May 2010	1965



NEW SPONSOR(S):	
Docomo Pacific	
STANDARDS IN THE WORKS	
Dimension Systems	
Pacific-Green Integrated	
STANDARDS BEING REVISED	
The Doctor's Clinic	
Atkins Kroll, Inc.	

ENROLLED FOR:	FA07	SP08	SU08	FA08	SP09	SU09	FA09	SP10	SU10	FA10	SP11	FA11	SP12	FALL 2007	
3 V's Graphic								1	1	1	1	1	2	SPRING 2008	189
Advance Electrical				1	2		4	2		2	1	3	1	SUMMER 2008	8
Advance Management				1										FALL 2008	177
Arluis Wedding													1	SPRING 2009	189
Atkins Kroll, Inc.							2	5		10	9	9	4	Summer 2009	3
B.Q. Fire Sprinkler	3	2			2									Fall 2009	272
Barrett Plumbing	8	8		5	4		4	6		3		1		Spring 2010	224
Bestsellers Inc.											1			Summer 2010	7
Black Construction	5	6		3										Fall 2010	249
Cabuhat Construction							1	1		1			1	Spring 2011	199
CAL PAC												4	3	Fall 2011	228
Cars Plus				5	2		5	6		5	3	3	4	Spring 2012	180
Core Tech. International												4	3	TOTAL:	2066
Department of Education							8	8	1	9	9	9	7		
Dept. of Administration	6	5		5	5		4	3		4	3	2	3		
Dept. of Land Management							16	11		15	10	8	9		
Dept. of Public Works (DPW)				6	4	5	2	2		2	2	2	2		
Duenas, Camacho & Associates							7	6		2	2	1	1		
DZSP 21				1	12		17	20	3	19	20	15	15		
Emergency Power Maintenance								5		5					
F.A.C.s Incorporated							1	1	1	3	1	1	1		
G.S. Villaflores								1							
G4S Security										8	3	5			
GHRA	9	9		10	10	1	17	14		17	9	11	7		
GTA TeleGuam				20	40		38	21		32	30	54	44		
Guam Contractor's Association								2		11	6	3	4		
Guam Housing Corp.												2	1		
Guam Police Department							20	14		10	20	3	2		
Guam Power Authority (GPA)	58	54	1	34	24		17	5		4	4	2			
Guam Shipyard	31	27		9	10		10	5	1	4	7		5		
Guam Waterworks Authority (GWA)				24	7	24	21	2		21	20	19	5	9	
Gulf Copper							10	11		7	1	1	1		
Hawaiian Rock Products	9	4		1	5		7	1		10	10	19	18		
IMCO															1
Infant of Prague								1		1	1	2	2		
Ironwood Estates										4	2	2	2		
Ironwood Manor												3	1		
J&B Modern Tech	2	2					1	1							
Judiciary of Guam							3	4		4	2	3	2		
L.A. Tire & Lube								1							
Lam Lam Tours & Transportation				12	12		8	2		6	3	4	1		
Lots of Learning															2
Medler'z		1		1	1										
Micronesia Self-Help Housing							4	4							
Mid Pac Far East												3	2	2	
Naval Computers & Telecomm.		1		1	1		1	1							
Next Generation							4	3							
Nippo Corporation										3	2	2	1		
Nissan Motors	3	3		3	2							1	1		
Onward Mangilao Resort	2	1		2											
Orion Construction							2	3		2	2	2			
P.R. Balagtas										1	1				
Pacific Human Resources															2
Pacific Micronesians Tours (PMT)		2		3	3		2	1		1					
Pacific Unlimited													6	4	
Perez Bros., Inc.										4	4	3	3		
Port Authority Guam			21	19	17		20	14	1	10	5	5	6		
Prestige Automobiles	3	3		4	4		2	2					1		
Red Stone International											3	4	1		
Sumitomo													1	1	
TG Engineering								4	3		4	3	5	4	
TLC Day Care	2	1		3	1		1						1		
Two Lover's Point		6		4	2			1		1		1	1		
United Tire Supply							2	2			2	3	1		
Universal Tire Supply		3			2			2					2		
V.P. Olivares							5	4		2	1	1	2		
W.B. Flores & Co.				2	2		2	4		3	3	3	3		
TOTAL:	141	186	8	175	185	3	263	212	7	244	193	224	180		



APPRENTICESHIP TRAINING PROGRAM

		FALL 2007	SPRING 2008	SUMMER 2008	FALL 2008	SPRING 2009	SUMMER 2009	Fall 2009	Spring 2010	Summer 2010	FALL 2010	Spring 2011	Fall 2011	Spring 2012	Total Per Enrolled:
1	AC100 Fund of Bookkeeping	1			5	5			6		6	5	7	2	37
2	AC103 Accounting Principles								1						1
3	AC150 Federal Income Tax I							1							1
4	AC233 Accounting using Quickbooks.										1				1
5	AE103 Basic Blueprint Reading	21	10		16	11			16		10	9	11	11	115
6	AE121 Tech Engineering Drawing I		19			14			14		10		14	2	73
7	AE122 Tech. Engineering Drawing II											8		4	12
8	AE150 Computer Aided Design								9			5		7	21
9	AST100 Intro To Auto Service Technology	3	10		3	4		4	4		5	8	8	6	55
10	AST110 Engine Repair				5							6		4	15
11	AST120 Automatic Trans	7				8			4			7		3	29
12	AST130 Manual Drive Train				5						8		7		20
13	AST140 Suspension & Steering							4			5		8		17
14	AST150 Brakes				3			5			6		1		15
15	AST160 Electrical Electronic System	4	3			5			5						17
16	AST170 Heating & A/C		3						13			1			17
17	AST180A Engine Performance I		3			2			5			3		1	14
18	AST180B Engine Performance II							1			4		2		7
19	AST210 Theory/ Engine Repair								2				2		4
20	AST220 Theory/Prac Auto Tran		3								4		4		11
21	AST230 Theory/Manual Drive Train											6		5	11
22	AST240 Theory/Suspension & Steering							3				4			7
23	AST250 Theory / Brakes							4				4			8
24	AST260 Theory/Prac. Electrical/Electronic					5							1	1	7
25	AST270 Theory/ Heating & Air Conditioning										8				8
26	AST280 Theory/Engine Performance								1						1
27	CD110 Early Childhood Education				2						1	1	1		5
28	CD140 Environmental for Young Children					1						1		1	3
29	CD180 Language Art in Early Childhood							1					2		3
30	CD221 Child Growth & Development	1			1				1		1			2	6
31	CD260 Social & Emotional	1							1					2	4
32	CD280 Physical & Language	1											1		2
33	CD240 Cognitive & Deve		1										1		2
34	CE210 Statics													5	5
35	CE211 Plane Surveying I							22					7		29
36	CE222 Plane Surveying II								18						18
37	CJ100 Introduction to Criminal Justice							1						1	2
38	CJ102 First Responder													1	1
39	CJ104 Dynamic of Substance Abuse													1	1
40	CJ148 Traffice Law Enforcement													1	1
41	CJ150 Criminal Procedure								1						1
42	CJ200 Criminal Law											1			1
43	CJ206 Social Value & Criminal							1							1
44	CS101 Introduction To Computer Systems							11	1		5				17
45	CS102 Computer Operations							5			1				6
46	CS103 RPG							7	5		2	2			16
47	CS104 Visual Basic Program							2	3		1		1		7
48	CS151 Windows Application	11	13		7	2		11			4	4	9	2	63
49	CS202 COBOL							4						1	5
50	CS203 Systems Analysis & Design							1							1
51	CS204 "C" Programming							4							4
52	CS252 Advance RPG II													2	2
53	CT140 Industrial Safety	8			41	19		19	18		17	16	31	26	195
54	CT152 Fundamentals Of Plumbing							19			18		7	9	53
55	CT153 Intro To Carpentry		14					16			13	9	1	7	60
56	CT154A Masonry Level I								14						14
57	CT162 Advance Plumbing	11													11
58	CT165A Electricity Level I				13	4		12			19	14	6	6	74
59	CT165B Electricity Level II				21	9		13	7				11	1	62
60	CT165C Electricity Level III					7		1	1			7		5	21
61	CT172 Plumbing Installation		14												14
62	CT173 Rough, Framing & Exterios												6		6

63	CT182 Uniform Plumbing Code											16		1	17
64	CT185A Refrigeration & A/C Level I					7			10					8	25
65	CT185B Refrigeration & A/C II							2			12			4	18
66	CT185C Refrigeration & A/C III								11			10			21
67	CT196A Fund of Oxyacetylene Welding					7			9			11	9	1	37
68	CT196B Fund of Oxyacetylene Welding I					16			18						34
69	CT197A Shielded Metal Arc Welding I											12	11	1	24
70	CT197B Shielded Metal Arc Welding II					12			14						26
71	Diesel Technology & Preventive Maint.					12									12
72	EE103 Electricity I / DC Circuits	2	9		8	9		6	4		5	15	16	4	78
73	EE104 Electricity II / Servicing Current	4	6		5	6		7	6		8	1	16	16	75
74	EE107 Intro To Instrumentation		14			6		1			2			3	26
75	EE110 Instrumentation		4			3									7
76	EE112 Electrical Devices		6		10	2			1			8		3	30
77	EE116 Digital Technology	6						7					4		17
78	EE211 IT Essentials I					20		19		1	6	5	7		58
79	EE215 IT Essentials II							8	10		13	2	5	12	50
80	EE265 Computer Networking I							10			10	1	6		27
81	EE266 Computer Networking II											1			1
82	EE267 Computer Networking III								10			2		3	15
83	EM103 Basic Electricity I	11	13												24
84	EM104 Basic Electricity II	17	12												29
85	EM111 Electrical Wiring		14												14
86	EM112 National Electrical Code	12													12
87	EM113 Refrigeration I		13												13
88	EM114 Refrigeration II							9							9
89	EN100W Fund of English-Writing	4	1											2	7
90	EN110 Freshman English	2						1							3
91	EN111 English Composition								2						2
92	HL130 First Aid & Safety							1							1
93	HL131 BLS For Health	1													1
94	HL202 Nutrition	1	1			3		4	4					2	15
95	HS140 Menu Planning	4			2			2	1		3				12
96	HS160 Hospitality Supervision		1			1									2
97	HS145 Culinary Math	3			5	1			2		1	1			13
98	HS152 Customer Service													2	2
99	HS203 ServSafe	4			3			2			2	1			12
100	HS203B HACCP										1	1			2
101	HS208 Food & Beverage Services	3			1			1					1		6
102	HS222 Food & Beverage Cost Control							6			7		2		15
103	HS237 Principles of European Cuisine					6			2			2			10
104	HS238 Garde Manger/Cold Pantry					5			7			1		2	15
105	HS244 Baking Bread	4			5			9			3		2		23
106	HS245 Food Production Principles		7			4			2			1			14
107	HS246 Buffet Service/Catering					5			7			3		2	17
108	HS247 International Cuisine							8			7		1		16
109	HS248 Patisserie	1			4			7			3		2		17
110	HS249 Advanced Food Preparation							8			6		1		15
111	MA085 Fund of Mathematics				7	4		6	4	1	3	2	7	1	35
112	MA095 College Mathematics	12	11	2	3	10	1	5	10	2	5	6	6	5	78
113	MA108 Intro To College Algebra	15	21	5	10	14		5	5	1	7	3	6	2	94
114	MA110A Finite Math	17	1		6	5	2	11	2	2		2	1	2	51
115	MA161A College Algebra/Tech Math.	24	16		7	6		5	6		8	1	1	1	75
116	MA161B College Algebra/Trigonometry		10		7	4		3			1	5		3	33
117	ME161A Intro To Auto Body				2								2		4
118	ME171A Auto Collision Repair		1			4							1		6
119	ME171B Autobody Refinishing							1							1
120	ME193 Truck Drive Trains							18							18
121	ME194 Truck Electrical Systems							18							18
122	MHT100A Intro To Diesel Technology										15			13	28
123	MHT100B Intro To Diesel Tech. & Prevention													18	18
124	MHT110 Diesel Engine I													9	9
125	MHT130 Brakes System											19			19
126	MHT140 Intro To Diesel Technology										15				15
127	MHT150 Heating, Ventilation & A/C												12		12
128	MHT160 Hydraulics											19			19
129	MHT170 Electrical / Electronics System												12		12
130	MK123 Principles of Marketing												6	2	8
131	OA101 Keyboarding Application	10	9	1	3	23		3	10		9	1	12	12	93

132	OA103 Filing System	2			4			7			5		5		23
133	OA109 Business Math using Excel	4	7			2		5	3		4	7	4	2	38
134	OA210 Database Management Systems										2		3		5
135	OA250 Office Procedures								1						1
136	PY125 Interpersonal Relations		5		2	1		3	11		3	5		14	44
137	SI110 Environmental Biology										6				6
138	SI141 Applied Physics		14		8	3		2						2	29
139	SM205 Purchasing												1		1
140	SM108 Introduction To Business											5			5
141	SM208 Personnel Supervision				2	6		2	1		6	2		3	22
142	SM220 Management Skills Development					2		3	5			4	1	6	21
143	SO130 Introduction To Sociology											2			2
144	SU100 Surveying Drafting								19						19
145	SU101 Surveying Problems I											18		1	19
146	SU230 Advanced Surveying										12				12
147	SU250 Intro To GIS										17				17
148	SU251 Advanced GIS											14		3	17
149	SU280 Special Topics In GIS													8	8
150	VC101 Intro To Visual Communication								1			1		1	3
151	VC102 Design Principles & Element								1		1				2
152	VC125 Digital Graphic Photoshop											1	1		2
153	VS126 Digital Graphics Illustrator											1			1
154	WA210 Treatment Processes & Procedures								23						23
155	WA215 Water Distribution System								23						23
156	WE105 Fund of Oxyacetylene Welding	12	18												30
157	WE110 Fund of Arc Welding I	9													9
158	WE111 Fund of Arc Welding II		9												9
159	WE115 Metal Fabrications							17							17
160	WE228 Basic Metallurgy				12										12
161	WT100 Intro To Waterworks Technology				14							10			24
162	WT110 Waterworks Science							11				5			16
163	WT140 Management Water/WasteWater Syst.										20				20
164	WW200 Primary Treatment										19				19
Total Per Semester:		253	316	8	266	286	3	424	386	7	419	346	300	285	3299

FALL 2007	253
SPRING 2008	316
SUMMER 2008	8
FALL 2008	266
SPRING 2009	286
Summer 2009	3
Fall 2009	424
Spring 2010	386
Summer 2010	7
Fall 2010	419
Spring 2011	346
Fall 2011	300
Spring 2012	285
TOTAL:	3299

