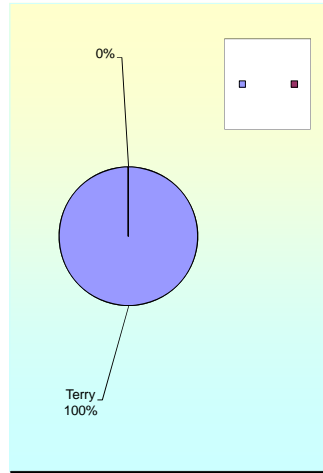


**APPRENTICESHIP TRAINING PROGRAM
STATISTICS BY EMPLOYER - TRADES - GENDER - COORDINATOR**

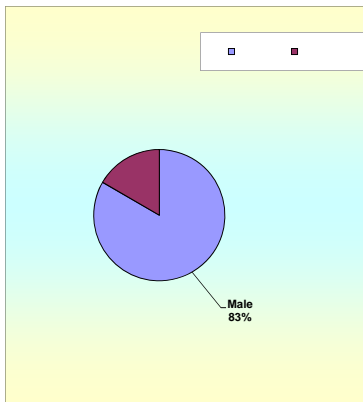
REPORT AS OF OCTOBER TO DECEMBER 2011

ACTIVE EMPLOYERS	
1	3V's Graphic Design 2
2	Advance Electrical 6
3	Atkins Kroll 11
4	Barrett Plumbing 3
5	Cabuhat Technical Services 1
6	CAL PAC 4
7	Cars Plus 5
8	Core Tech Int'l 5
9	Dept. of Education 10
10	Dept. of Land Management 30
11	Dept. of Public Works 2
12	DOA 4
13	Duenas, Camacho & Assoc. 3
14	DZSP 21 20
15	Emergency Power Maint. 0
16	F.A.C.S Incorporated 1
17	Fiesta Resort 2
18	G4S Security Systems 8
19	GTA TeleGuam 64
20	Guam Contractors Assoc. 33
21	Guam Housing 2
22	Guam Plaza 1
23	Guam Police Dept. 14
24	Guam Power Authority 3
25	Guam Shipyard 11
26	Guam Waterworks 7
27	Gulf Copper 3
28	Hard Rock Café 0
29	Hawaiian Rock Products 22
30	Hilton Guam 4
31	Hyatt Regency Guam 8
32	IMCO General Co. 1
33	Infant of Prague 4
34	Ironwood Estates 4
35	Ironwood Manor 3
36	Judiciary of Guam 4
37	Lam Lam Tours 10
38	Mid Pac Far East 2
39	Next Generation 0
40	Nippo Corporation 2
41	Nissan Guam 1
42	Orion Const. 2
43	Outrigger Hotel 1
44	P.R. Balagtas 2
45	Pacific Island Club 1
46	Pacific Unlimited 6
47	P&E Construction Co. 2
48	Perez Bros., Inc. 5
49	PMT Corp. 0
50	Port Authority Guam 15
51	Prestige Auto 1
52	Red Stone International 3
53	Sheraton Hotel 1
54	Sumitomo Mitsui 3
55	TG Engineer 6
56	TL C Day Care 4
57	Two Lover's Point 1
58	United Tire Services 4
59	V.P. Olivares 2
60	W.B. Flores & Co. 4
61	Westin Resort 1
62	Universal Tire 1
TOTAL: 385	

BY COORDINATOR	
Terry	385
Total	385

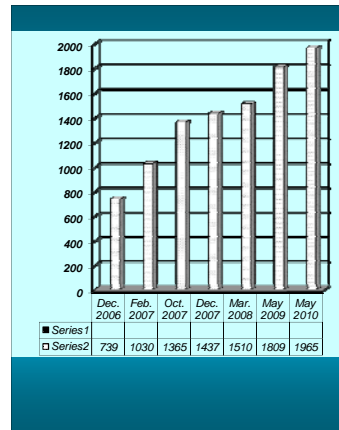


BY GENDER	
Male	321
Female	64
Total:	385

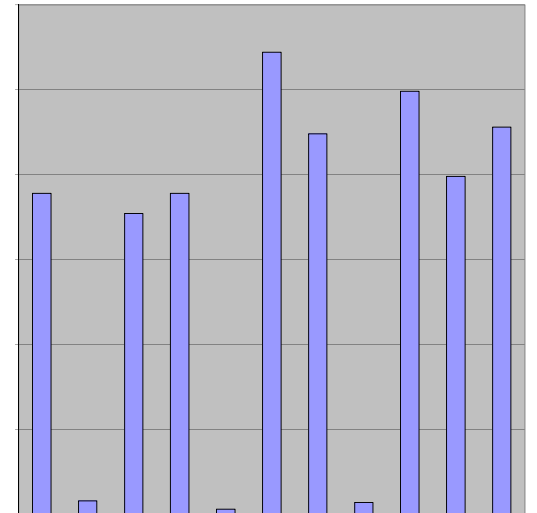


NEW EMPLOYERS:	
P & E Consturction	
Alcast Painting Inc.	
STANDARDS IN THE WORKS	
Docomo Pacific	
Dimension Systems	

DEPARTMENT OF LABOR Alien Labor Processing Certification Division EMPLOYER'S STATISTICAL REPORT H2 Workers	
Dec. 2006	739
Feb. 2007	1030
Oct. 2007	1365
Dec. 2007	1437
Mar. 2008	1510
May 2009	1809
May 2010	1965



ENROLLED FOR:	FA07	SP08	SU08	FA08	SP09	SU09	FA09	SP10	SU10	FA10	SP11	FA11	SP12	FALL 2007	
3 V's Graphic							1		1	1	1			141	
Advance Electrical				1	2		4	2		2	1	3		189	
Advance Management				1										8	
Atkins Kroll, Inc.							2	5		10	9	9		177	
B.Q. Fire Sprinkler	3	2			2									189	
Barrett Plumbing	8	8		5	4		4	6		3		1		3	
Bestsellers Inc.												1		272	
Black Construction	5	6		3										224	
Cabuhat Construction							1	1		1				7	
CAL PAC												4		249	
Cars Plus				5	2		5	6		5	3	3		199	
Core Tech. International												4	3	228	
Department of Education							8	8	1	9	9	9		1886	
Dept. of Administration	6	5		5	5		4	3		4	3	2			
Dept. of Land Management	16	11					16	11		15	10	8			
Dept. of Public Works (DPW)				6	4	5		2	2	2	2	2			
Duenas, Camacho & Associates							7	6		2	2	1			
DZSP 21					1	12		17	20	3	19	20	15		
Emergency Power Maintenance									5	5					
F.A.C.s Incorporated							1	1	1	3	1	1			
G.S. Villaflores									1						
G4S Security										8	3	5			
GHRA	9	9		10	10	1	17	14		17	9	11			
GTA TeleGuam				20	40		38	21		32	30	54			
Guam Contractor's Association								2		11	6	3			
Guam Housing Corp.												2			
Guam Police Department							20	14		10	20	3			
Guam Power Authority (GPA)	58	54	1	34	24		17	5		4	4	2			
Guam Shipyard	31	27		9	10		10	5	1	4	7				
Guam Waterworks Authority (GWA)				24	7	24	21	2	21	20	19	5	9		
Gulf Copper							10	11		7	1	1			
Hawaiian Rock Products	9	4		1	5		7	1		10	10	19			
Infant of Prague								1		1	1	2			
Ironwood Estates										4	2	2			
Ironwood Manor												3			
J&B Modern Tech	2	2					1	1							
Judiciary of Guam							3	4		4	2	3			
L.A. Tire & Lube								1							
Lam Lam Tours & Transportation				12	12		8	2		6	3	4			
Medler'z				1	1	1									
Micronesia Self-Help Housing							4	4							
Mid Pac Far East											3	2			
Naval Computers & Telecomm.				1	1	1		1	1						
Next Generation							4	3							
Nippo Corporation										3	2	2			
Nissan Motors	3	3		3	2						1	1			
Onward Mangilao Resort	2	1		2											
Orion Construction							2	3		2	2	2			
P.R. Balagtas										1	1				
Pacific Micronesia Tours (PMT)				2	3	3	2	1		1					
Pacific Unlimited												6			
Perez Bros., Inc.										4	4	3			
Port Authority Guam				21	19	17	20	14	1	10	5	5			
Prestige Automobiles	3	3		4	4		2	2				1			
Red Stone International											3	4			
Sumitomo												1			
TG Engineering							4	3		4	3	5			
TLC Day Care	2	1		3	1		1					1			
Two Lover's Point				6	4	2		1		1		1			
United Tire Supply							2	2				2	3		
Universal Tire Supply				3		2		2				2			
V.P. Olivares							5	4		2	1	1			
W.B. Flores & Co.							2	4		3	3	3			
TOTAL:	141	189	8	177	189	3	272	224	7	249	199	228			



APPRENTICESHIP TRAINING PROGRAM

		FALL 2007	SPRING 2008	SUMMER 2008	FALL 2008	SPRING 2009	SUMMER 2009	Fall 2009	Spring 2010	Summer 2010	FALL 2010	Spring 2011	Fall 2011	Spring 2012	Total Per Enrolled:
1	AC100 Fund of Bookkeeping	1			5	5			6		6	5	7		35
2	AC103 Accounting Principles								1						1
3	AC150 Federal Income Tax I							1							1
4	AC233 Accounting using Quickbooks.										1				1
5	AE103 Basic Blueprint Reading	21	10		16	11			16		10	9	11		104
6	AE121 Tech Engineering Drawing I		19			14			14		10		14		71
7	AE122 Tech. Engineering Drawing II											8			8
8	AE150 Computer Aided Design								9			5			14
9	AST100 Intro To Auto Service Technology	3	10		3	4		4	4		5	8	8		49
10	AST110 Engine Repair				5							6			11
11	AST120 Automatic Trans	7				8			4			7			26
12	AST130 Manual Drive Train				5						8		7		20
13	AST140 Suspension & Steering							4			5		8		17
14	AST150 Brakes				3			5			6		1		15
15	AST160 Electrical Electronic System	4	3			5			5						17
16	AST170 Heating & A/C		3						13			1			17
17	AST180A Engine Performance I		3			2			5			3			13
18	AST180B Engine Performance II							1			4		2		7
19	AST210 Theory/ Engine Repair								2				2		4
20	AST220 Theory/Prac Auto Tran		3								4		4		11
21	AST230 Theory/Manual Drive Train											6			6
22	AST240 Theory/Suspension & Steering							3				4			7
23	AST250 Theory / Brakes							4				4			8
24	AST260 Theory/Prac. Electrical/Electronic					5							1		6
25	AST270 Theory/ Heating & Air Conditioning										8				8
26	AST280 Theory/Engine Performance								1						1
27	CD110 Early Childhood Education				2						1	1	1		5
28	CD140 Environmental for Young Children					1						1			2
29	CD180 Language Art in Early Childhood							1					2		3
30	CD221 Child Growth & Development	1			1				1		1				4
31	CD260 Social & Emotional	1							1						2
32	CD280 Physical & Language	1											1		1
33	CD240 Cognitive & Deve		1										1		1
34	CE211 Plane Surveying I							22					7		29
35	CE222 Plane Surveying II								18						18
36	CJ100 Introduction to Criminal Justice							1							1
37	CJ150 Criminal Procedure								1						1
38	CJ200 Criminal Law											1			1
39	CJ206 Social Value & Criminal							1							1
40	CS101 Introduction To Computer Systems							11	1		5				17
41	CS102 Computer Operations							5			1				6
42	CS103 RPG							7	5		2	2			16
43	CS104 Visual Basic Program							2	3		1		1		7
44	CS151 Windows Application	11	13		7	2		11			4	4	9		52
45	CS202 COBOL							4							4
46	CS203 Systems Analysis & Design							1							1
47	CS204 "C" Programming							4							4
48	CT140 Industrial Safety	8			41	19		19	18		17	16	31		169
49	CT152 Fundamentals Of Plumbing							19			18		7		44
50	CT153 Intro To Carpentry		14					16			13	9	1		53
51	CT154A Masonry Level I								14						14
52	CT162 Advance Plumbing	11													11
53	CT165A Electricity Level I				13	4		12			19	14	6		68
54	CT165B Electricity Level II				21	9		13	7				11		61
55	CT165C Electricity Level III					7		1	1			7			16
56	CT172 Plumbing Installation		14												14
57	CT173 Rough, Framing & Exterios												6		6
58	CT182 Uniform Plumbing Code											16			16
59	CT185A Refrigeration & A/C Level I					7			10				8		25
60	CT185B Refrigeration & A/C II							2			12				14
61	CT185C Refrigeration & A/C III								11			10			21
62	CT196A Fund of Oxyacetylene Welding				7			9			11	9			36

63	CT196B Fund of Oxyacetylene Welding I					16			18							34
64	CT197A Shielded Metal Arc Welding I										12	11				23
65	CT197B Shielded Metal Arc Welding II					12			14							26
66	Diesel Technology & Preventive Maint.				12											12
67	EE103 Electricity I / DC Circuits	2	9		8	9		6	4		5	15	16			74
68	EE104 Electricity II / Servicing Current	4	6		5	6		7	6		8	1	16			59
69	EE107 Intro To Instrumentation		14			6		1			2					23
70	EE110 Instrumentation		4			3										7
71	EE112 Electrical Devices		6		10	2			1			8				27
72	EE116 Digital Technology	6						7							4	13
73	EE211 IT Essentials I					20		19		1	6	5	7			58
74	EE215 IT Essentials II							8	10		13	2	5			38
75	EE265 Computer Networking I							10			10	1	6			27
76	EE266 Computer Networking II											1				1
77	EE267 Computer Networking III								10			2				12
78	EM103 Basic Electricity I	11	13													24
79	EM104 Basic Electricity II	17	12													29
80	EM111 Electrical Wiring		14													14
81	EM112 National Electrical Code	12														12
82	EM113 Refrigeration I		13													13
83	EM114 Refrigeration II							9								9
84	EN100W Fund of English-Writing	4	1													5
85	EN110 Freshman English	2						1								3
86	EN111 English Composition								2							2
87	HL130 First Aid & Safety							1								1
88	HL131 BLS For Health	1														1
89	HL202 Nutrition	1	1			3		4	4							13
90	HS140 Menu Planning	4			2			2	1		3					12
91	HS160 Hospitality Supervision		1			1										2
92	HS145 Culinary Math	3			5	1			2		1	1				13
93	HS203 ServSafe	4			3			2			2	1				12
94	HS203B HACCP										1	1				2
95	HS208 Food & Beverage Services	3			1			1					1			6
96	HS222 Food & Beverage Cost Control							6			7		2			13
97	HS237 Principles of European Cuisine					6			2			2				10
98	HS238 Garde Manger/Cold Pantry					5			7			1				13
99	HS244 Baking Bread	4			5			9			3		2			23
100	HS245 Food Production Principles		7			4			2			1				14
101	HS246 Buffet Service/Catering					5			7			3				15
102	HS247 International Cuisine							8			7		1			16
103	HS248 Patisserie	1			4			7			3		2			17
104	HS249 Advanced Food Preparation							8			6		1			15
105	MA085 Fund of Mathematics				7	4		6	4	1	3	2	7			34
106	MA095 College Mathematics	12	11	2	3	10	1	5	10	2	5	6	6			73
107	MA108 Intro To College Algebra	15	21	5	10	14		5	5	1	7	3	6			92
108	MA110A Finite Math	17	1		6	5	2	11	2	2		2	1			49
109	MA161A College Algebra/Tech Math.	24	16		7	6		5	6		8	1	1			74
110	MA161B College Algebra/Trigonometry		10		7	4		3			1	5				30
111	ME161A Intro To Auto Body				2								2			2
112	ME171A Auto Collision Repair		1			4						1				6
113	ME171B Autobody Refinishing							1								1
114	ME193 Truck Drive Trains							18								18
115	ME194 Truck Electrical Systems							18								18
116	MHT100A Intro To Diesel Technology										15					15
117	MHT110 Diesel Engine I															
118	MHT130 Brakes System											19				19
119	MHT140 Intro To Diesel Technology										15					15
120	MHT150 Heating, Ventilation & A/C												12			12
121	MHT160 Hydraulics											19				19
122	MHT170 Electrical / Electronics Systems												12			12
123	MK123 Principles of Marketing												6			6
124	OA101 Keyboarding Application	10	9	1	3	23		3	10		9	1	12			81
125	OA103 Filing System	2			4			7			5		5			23
126	OA109 Business Math using Excel	4	7			2		5	3		4	7	4			36
127	OA210 Database Management Systems										2		3			2
128	OA250 Office Procedures								1							1
129	PY125 Interpersonal Relations		5		2	1		3	11		3	5				30
130	SI110 Environmental Biology										6					6
131	SI141 Applied Physics		14		8	3		2								27

132	SM205 Purchasing													1		1
133	SM108 Introduction To Business													5		5
134	SM208 Personnel Supervision				2	6		2	1			6	2			19
135	SM220 Management Skills Development					2		3	5				4	1		15
136	SO130 Introduction To Sociology												2			2
137	SU100 Surveying Drafting								19							19
138	SU101 Surveying Problems I												18			18
139	SU230 Advanced Surveying										12					12
140	SU250 Intro To GIS										17					17
141	SU251 Advanced GIS												14			14
142	VC101 Intro To Visual Communication								1				1			2
143	VC102 Design Principles & Element								1		1					2
144	VC125 Digital Graphic Photoshop												1	1		2
145	VS126 Digital Graphics Illustrator												1			1
146	WA210 Treatment Processes & Procedures								23							23
147	WA215 Water Distribution System								23							23
148	WE105 Fund of Oxyacetylene Welding	12	18													30
149	WE110 Fund of Arc Welding I	9														9
150	WE111 Fund of Arc Weling II		9													9
151	WE115 Metal Fabrications								17							17
152	WE228 Basic Metallurgy				12											12
153	WT100 Intro To Waterworks Technology				14								10			24
154	WT110 Waterworks Science								11				5			16
155	WT140 Management Water/WasteWater Syst.											20				20
156	WW200 Primary Treatment											19				19
Total Per Semester:		253	316	8	266	286	3	424	386	7	419	346	300			3014

--	--

FALL 2007	253
SPRING 2008	316
SUMMER 2008	8
FALL 2008	266
SPRING 2009	286
Summer 2009	3
Fall 2009	424
Spring 2010	386
Summer 2010	7
Fall 2010	419
Spring 2011	346
Fall 2011	300
TOTAL:	3014

